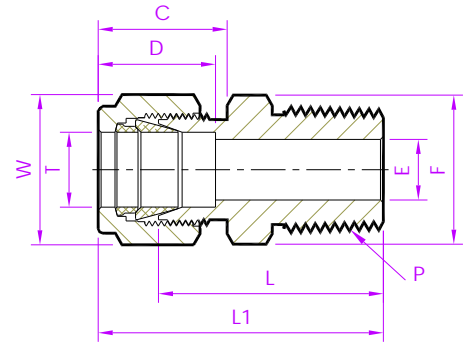
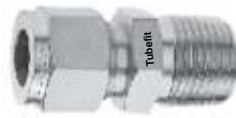


- Tube Fitting (Double Ferrule)-
Tube To Male Pipe Thread



Male Connector

Metric Tube x NPT (M)

TubeFit Part No.	Equivalent Part No. Type 1	Equivalent Part No. Type 2	TUBE OD Ø T	NPT Male Pipe Size	ØE	D	C	L	L1	Body Hex F	Nut Hex W
			(mm)	(In)	Dimensions in Millimetres						
2M - MCD - 2N	- 2MO - 1 - 2	M2MSC1/8N	2	1/8	1.7	12.9	15.3	23.9	30.5	11.1	11.1
3M - MCD - 2N	- 3MO - 1 - 2	M3MSC1/8N	3	1/8	2.4	12.9	15.3	23.9	30.5	11.1	11.1
3M - MCD - 4N	- 3MO - 1 - 4	M3MSC1/4N	3	1/4	2.4	12.9	15.3	29.0	35.6	14.2	11.1
4M - MCD - 2N	- 4MO - 1 - 2	M4MSC1/8N	4	1/8	2.4	13.7	16.1	24.6	31.2	11.1	11.1
4M - MCD - 4N	- 4MO - 1 - 4	M4MSC1/4N	4	1/4	2.4	13.7	16.1	29.7	36.3	14.2	11.1
6M - MCD - 2N	- 6MO - 1 - 2	M6MSC1/8N	6	1/8	4.8	15.3	17.7	25.4	32.8	14.2	14.2
6M - MCD - 4N	- 6MO - 1 - 4	M6MSC1/4N	6	1/4	4.8	15.3	17.7	30.5	37.9	14.2	14.2
6M - MCD - 6N	- 6MO - 1 - 6	M6MSC3/8N	6	3/8	4.8	15.3	17.7	31.0	38.4	17.4	14.2
6M - MCD - 8N	- 6MO - 1 - 8	M6MSC1/2N	6	1/2	4.8	15.3	17.7	37.3	44.7	22.2	14.2
8M - MCD - 2N	- 8MO - 1 - 2	M8MSC1/8N	8	1/8	4.8	16.2	18.6	26.7	34.2	16	16
8M - MCD - 4N	- 8MO - 1 - 4	M8MSC1/4N	8	1/4	6.4	16.2	18.6	31.2	38.7	16	16
8M - MCD - 6N	- 8MO - 1 - 6	M8MSC3/8N	8	3/8	6.4	16.2	18.6	31.8	39.3	17.4	16
8M - MCD - 8N	- 8MO - 1 - 8	M8MSC1/2N	8	1/2	6.4	16.2	18.6	38.1	45.6	22.2	16
10M - MCD - 2N	- 10MO - 1 - 2	M10MSC1/8N	10	1/8	4.8	17.2	19.5	28.7	36.3	19	19
10M - MCD - 4N	- 10MO - 1 - 4	M10MSC1/4N	10	1/4	7.9	17.2	19.5	33.3	40.9	19	19
10M - MCD - 6N	- 10MO - 1 - 6	M10MSC3/8N	10	3/8	7.9	17.2	19.5	33.3	40.9	19	19
10M - MCD - 8N	- 10MO - 1 - 8	M10MSC1/2N	10	1/2	7.9	17.2	19.5	38.9	46.5	22.2	19
10M - MCD - 12N	- 10MO - 1 - 12	M10MSC3/4N	10	3/4	7.9	17.2	19.5	40.4	48.0	27	19
10M - MCD - 16N	- 10MO - 1 - 16	M10MSC1N	10	1	7.9	17.2	19.5	45.3	55.0	35	19
12M - MCD - 2N	- 12MO - 1 - 2	M12MSC1/8N	12	1/8	4.8	22.8	22.0	28.7	38.8	22.2	22.2
12M - MCD - 4N	- 12MO - 1 - 4	M12MSC1/4N	12	1/4	7.1	22.8	22.0	33.3	43.4	22.2	22.2
12M - MCD - 6N	- 12MO - 1 - 6	M12MSC3/8N	12	3/8	9.5	22.8	22.0	33.3	43.4	22.2	22.2
12M - MCD - 8N	- 12MO - 1 - 8	M12MSC1/2N	12	1/2	9.5	22.8	22.0	38.9	49.0	22.2	22.2
12M - MCD - 12N	- 12MO - 1 - 12	M12MSC3/4N	12	3/4	9.5	22.8	22.0	40.4	50.5	27	22.2
14M - MCD - 4N	- 14MO - 1 - 4	M14MSC1/4N	14	1/4	7.1	24.4	22.0	34.0	44.1	25.4	25.4
14M - MCD - 6N	- 14MO - 1 - 6	M14MSC3/8N	14	3/8	9.5	24.4	22.0	34.0	44.1	25.4	25.4
14M - MCD - 8N	- 14MO - 1 - 8	M14MSC1/2N	14	1/2	11.1	24.4	22.0	38.9	49.0	25.4	25.4
15M - MCD - 8N	- 15MO - 1 - 8	M15MSC1/2N	15	1/2	11.9	24.4	22.0	38.9	49.0	25.4	25.4
16M - MCD - 6N	- 16MO - 1 - 6	M16MSC3/8N	16	3/8	9.5	24.4	22.0	34.0	44.1	25.4	25.4
16M - MCD - 8N	- 16MO - 1 - 8	M16MSC1/2N	16	1/2	11.9	24.4	22.0	38.9	49.0	25.4	25.4
16M - MCD - 12N	- 16MO - 1 - 12	M16MSC3/4N	16	3/4	12.7	24.4	22.0	40.4	50.5	25.4	25.4
18M - MCD - 8N	- 18MO - 1 - 8	M18MSC1/2N	18	1/2	11.9	24.4	22.0	40.4	50.5	27	30
18M - MCD - 12N	- 18MO - 1 - 12	M18MSC3/4N	18	3/4	15.1	24.4	22.0	40.4	50.5	27	30
20M - MCD - 8N	- 20MO - 1 - 8	M20MSC1/2N	20	1/2	11.9	26.0	22.0	42.2	52.3	30	32
20M - MCD - 12N	- 20MO - 1 - 12	M20MSC3/4N	20	3/4	15.9	26.0	22.0	42.2	52.3	30	32
20M - MCD - 16N	- 20MO - 1 - 16	M20MSC1N	20	1	21.8	26.0	22.0	47.1	57.7	35	32
22M - MCD - 12N	- 22MO - 1 - 12	M22MSC3/4N	22	3/4	15.9	26.0	22.0	42.2	52.3	30	32
22M - MCD - 16N	- 22MO - 1 - 16	M22MSC1N	22	1	18.3	26.0	22.0	47.0	57.1	35	32
25M - MCD - 8N	- 25MO - 1 - 8	M25MSC1/2N	25	1/2	11.9	31.3	26.5	45.2	57.5	35	38
25M - MCD - 12N	- 25MO - 1 - 12	M25MSC3/4N	25	3/4	15.9	31.3	26.5	45.2	57.5	35	38
25M - MCD - 16N	- 25MO - 1 - 16	M25MSC1N	25	1	21.8	31.3	26.5	50.0	62.3	35	38
28M - MCD - 16N	- 28MO - 1 - 16	M28MSC1N	28	1	21.8	36.6	36.6	51.6	72.4	41	46
28M - MCD - 20N	- 28MO - 1 - 20	M28MSC1-1/4N	28	1-1/4	21.8	36.6	36.6	52.9	73.1	46	46
30M - MCD - 20N	- 30MO - 1 - 20	M30MSC1-1/4N	30	1-1/4	26.2	39.6	39.2	55.6	77.2	46	50
32M - MCD - 20N	- 32MO - 1 - 20	M32MSC1-1/4N	32	1-1/4	28.6	42.0	41.6	56.6	79.6	46	50
38M - MCD - 24N	- 38MO - 1 - 24	M38MSC1-1/2N	38	1-1/2	33.7	49.4	47.9	64.0	91.6	55	60

NOTE: 1)The E Dimension is the minimum opening & fittings of this group may be back drilling to larger ID at pipe thread or straight thread end.
2)Dimension L1, C, D is shown in the finger-tight position. 3)Dimensions are for reference only and are subject to change 4)NPT thread as per ANSI B 1.20.1.

- ALL PART NUMBERS ARE PROPRIETARY OF THEIR RESPECTIVE OWNERS. -